



2020 Annual Report





Lily

Lily was only 14 months old when she was diagnosed with ependymoma, a brain tumor that left her unable to walk. But thanks to her relentless hard work and the research that went into creating the treatment that saved her, Lily defied the odds. Today, Lily is not only walking, she has also fulfilled her goal of joining her school's crew team.

Your support is making milestones possible for kids with cancer.



Quincy

Juvenile myelomonocytic leukemia (JMML) is an incredibly rare cancer with a poor prognosis, so when treatment was only worsening 4-month-old Quincy's condition, his parents weren't sure what to do. Then a genetic test, made possible by ALSF funding, revealed a treatable mutation in Quincy's cancer, and today Quincy is speaking his first words and taking his first steps.



Tony

Since he was 2-and-a-half years old, Tony has faced multiple cancers and many side effects, one of which left him unable to move beyond blinking. But Tony was never a quitter and has overcome it all – he has even earned the rank of an Eagle Scout, an accomplishment he has wanted to reach his entire life!



Kaela

Right before her fifth birthday, Kaela was diagnosed with osteosarcoma, the most common type of childhood bone cancer. In the blink of an eye, her future became uncertain. She underwent treatment that included an above-the-knee amputation of her left leg, and today she is 13 years cancer-free. In 2020, she graduated high school and entered college, major milestones her family was afraid she'd never see.



Boris's Bracelets

When lockdown was in full swing, 11-year-old Boris chose to spend his time making and selling bracelets to support families of kids with cancer. He not only beat the indoor blues – he surpassed his fundraising goal and showed kids who were fighting cancer that there is hope!

Our creative supporters always find ways to make lemonade out of lemons!



A Stand with a Veggie Twist

Kaylynn had too many vegetables from her backyard garden. What began as a quarantine project quickly became a fundraiser for kids with cancer: Kaylynn's family set out a stand with their excess veggies and herbs and sold every single one by asking for donations to ALSF!



Staying Active in the Office

Alabama law firm Lightfoot, Franklin & White couldn't hold their normal lemonade stand in the summer of 2020. So instead, Terry, an attorney at Lightfoot, pledged to perform 2,000 push-ups in one day to honor the \$2,000 Alex raised at her first stand. Friends, family and colleagues donated a penny per push-up, and Terry's \$30,000 accomplishment helped his firm raise \$100,000 in four years!

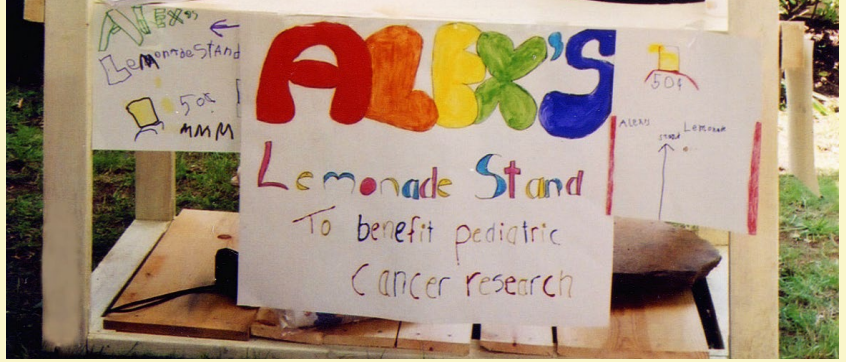


The Neighborhood Race

Ever since their daughter Lucy was diagnosed with Ewing sarcoma, Team Lemon runners Anthony and Rachel vowed to run the Chicago Marathon in honor of her and all children fighting cancer each year. Despite the cancellation of the race in October 2020, the couple decided to make the best of it by creating their own course in their community!

About ALSF

ALEX'S LEMONADE STAND FOUNDATION (ALSF) emerged from the front yard lemonade stand of 4-year-old Alexandra "Alex" Scott, who was fighting cancer and wanted to raise money to find cures for all children with cancer. Her spirit and determination inspired others to support her cause, and when she passed away at the age of 8, she had raised \$1 million. Since then, the Foundation bearing her name has evolved into a national fundraising movement. Today, ALSF is one of the leading funders of pediatric cancer research in the U.S. and Canada raising more than \$200 million so far, funding over 1,000 research projects and providing programs to families affected by childhood cancer. For more information, visit AlexsLemonade.org.



20 years after Alex's her legacy of cures co



Dear friends,

No one will ever forget 2020. The COVID-19 pandemic affected everyone, but that was especially true for our childhood cancer families, who struggled to ensure their children safely received the care they needed. And yet, for all the hurdles of this past year, we can't help but reflect on the creativity, ingenuity and positivity of supporters like you. When life handed all of us the biggest lemon of all, you made lemonade for kids with cancer.

You stepped up for the families that needed a boost, giving parents one less burden to worry about. Thanks to you, the COVID-19 emergency fund provided more than \$600,000 in grocery support to over 2,000 childhood cancer families from March through December. Inside, you'll put a face to these stories and meet families you helped like Francisco's.

You also showed up for research. In 2020, the pandemic shut down labs, but it did not shut down the work towards cures and safer treatments. ALSF-funded researchers learned new data science techniques in virtual workshops taught by ALSF's Childhood Cancer Data Lab. Others finished publications. All the while, they determined the fastest, safest way to resume their lab work and keep the vital projects that you fund accelerating toward helping kids fighting cancer.

Through it all, the greatest joy was experiencing the tremendous dedication of our supporters. From virtual 5Ks through neighborhoods to socially distant lemonade stands, and stair climbs in your own homes, we always knew you were dedicated to the cause, but last year took that to a whole new level.

While 2020 provided so many hurdles, it also represented a bittersweet milestone for us: 20 years since our daughter Alex's first lemonade stand. The two decades since that sweltering July 1st day have brought so much joy into our lives. Alex's belief has led to safer, more effective treatments for thousands of children. You've carried her legacy further than we ever could've imagined when she handed out her first cup of lemonade in our yard. She remains at the heart of everything you make possible for kids with cancer.

Lemons may be sour, but that helps us appreciate the sweetness of lemonade that much more. Alex always saw the sweetness in everything. That perspective is why your acts of kindness, generosity and warmth are what we'll remember most about 2020.

Thank you for supporting our daughter's dream, 20 years and counting.

Until there are cures for all kids,

Liz and Jay Scott
Alex's Parents/Co-Executive Directors of
Alex's Lemonade Stand Foundation



**first stand,
continues.**

2020 In Review



Fundraising may have looked different last year, but that didn't stop ALSF supporters from stepping up in the fight against childhood cancer. You squeezed every last drop out of 2020's lemons, and that support added up to some sweet outcomes for families:

2,000+ siblings encouraged, comforted and empowered through SuperSibs mailings.

31 novel research grants funded.



450+ families helped with travel support including flights, gas cards and hotel stays.

2,000+ families provided with grocery support during the COVID-19 pandemic.

222 COVID-19 grant extensions approved to keep projects moving forward through any pandemic-related setbacks.

That was all possible thanks to YOUR:

5,500 virtual and socially distant fundraisers, stands and events.

Your Support Keeps Kids Smiling

\$20M+
total raised to help kids with cancer!

\$2.2 million raised for The Million Mile during Childhood Cancer Awareness Month.

Every drop of support adds up to an overflowing cup of impact.



Lily

Diagnosed with acute lymphoblastic leukemia, Lily is fighting cancer on her own terms. She continues to recover, and her parents are so appreciative knowing there are so many people standing behind these kids in their fight.



Scarlett

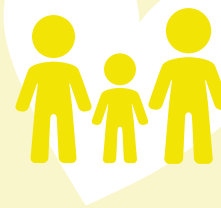
Scarlett celebrated the end of chemotherapy treatment for neuroblastoma with her family by "ringing the bell" at her hospital. Her family participated in The Million Mile last fall and are ecstatic to hit this critical milestone. Everything you do gives them strength.



Hope and CJ

Two siblings fighting two different cancers. Hope and CJ epitomize strength by leaning on one another. You helped provide grocery assistance as part of the COVID-19 emergency fund.

Providing Emergency Support in Unprecedented Times



2,000+ families provided with grocery support during the COVID-19 pandemic

Childhood cancer doesn't stop, even when there's a worldwide pandemic.

Your support didn't stop either.



Families navigating life with a child who has cancer already know the challenges of a world turned upside down. When 2020 brought the added complications of a pandemic, suddenly they were faced with more to worry about – mentally, emotionally and especially financially.

The ALSF-funded My Childhood Cancer: Survey Series recorded the responses of 360 parents and caregivers of children currently in treatment or still being monitored for cancer between April and May, 2020. My Childhood Cancer is an ongoing data collection and survey project funded by ALSF that seeks to gain valuable insight into the experience of families throughout their childhood cancer journey. The study, in part, asked about the economic impact of the pandemic on these participants' lives. The results were telling:

Impact of Pandemic on Childhood Cancer Families

28% reported lost household wages due to the pandemic

11% had difficulty paying for basic needs

5% strained to pay for their child's medical care

**results from My Childhood Cancer: Survey Series*

Understanding the seriousness of the situation for childhood cancer families, ALSF created the COVID-19 emergency fund to support these families with gas cards to alleviate grocery shopping expenses. Care packages with sanitation products were also sent. In 2020, more than 2,000 families received help for these everyday needs.



Cece has been fighting acute lymphoblastic leukemia since she was 3 years old. The day she was diagnosed, her dad stopped working to take care of her, driving her to and from treatment. Becoming a single-income household has been a big adjustment for Cece's family, but with assistance from ALSF's COVID-19 emergency fund, they have found peace of mind.

"We recently received grocery gift cards and it was so appreciated! Thank you for everything you do."

- Lexi, Cece's mom



A month after his first birthday, Francisco was diagnosed with embryonal rhabdomyosarcoma (ERMS). With the arrival of COVID-19, traveling and finances were getting difficult to keep up. But Francisco's family had ALSF to give them a hand when they needed it most, helping them with grocery cards through the COVID-19 emergency fund.

"We are not alone thanks to foundations like yours."

- Bibiana, Francisco's mom

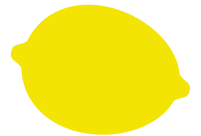


SuperSib Zane



Childhood cancer hero Kade

Supporting Families on Their Cancer Journey



In 2020, childhood cancer families needed your help more than ever. And you delivered. ALSF has always believed that supporting families through their fight is just as critical as funding the type of research that offers long-term solutions to these diseases. That's why every ounce of your generosity mattered. Families faced many new difficulties in 2020, from traveling safely to treatment during a pandemic to comforting and encouraging siblings that couldn't visit their sick brother or sister in the hospital. See what you made possible for families below.

SuperSibs

When a child is diagnosed with cancer, it can take a lot of attention away from their siblings. SuperSibs is designed to comfort, encourage and empower these siblings through a diagnosis. Last year, with fewer family members allowed in hospitals due to COVID-19 precautions, helping siblings feel special was especially important. Kids like Zane, whose brother, Quinn, was diagnosed with leukemia, loves getting SuperSibs Comfort and Care mailings. Every time they come, he dances and giggles with excitement.

Travel For Care

Despite the risk of COVID-19 exposure, many families had no choice but to travel to hospitals far from home for the critical treatments their child needed. Some had to fly on airplanes to make their appointments. Many had to stay isolated in lodging near hospitals, ensuring they weren't exposed while their children's bodies were immunocompromised. Some families just needed a little extra gas money. No matter what the circumstance, you helped provide financial assistance to aid more than 450 families traveling for treatment, like Kade's.

Your support helps families at every step of their childhood cancer journey.

Other Support Services

Every family's cancer journey is unique, as are their needs. With your help, ALSF continues to expand the critical services it offers to families. Here are just a few ways that help extends to so many families:

Childhood Cancer Guides – the most comprehensive guides for parents about navigating a child's diagnosis

Treatment journal – a free binder that helps parents track their child's treatment schedule

Clinical Trials Navigation – Connecting parents with clinical trial options across the country specific to their child

Sharing Hero Stories – Parents can share the strength and bravery of their child's cancer journey on the ALSF website

Learn more at [ALSFFamilyServices.org](https://www.alsffamilyservices.org).





Going The Extra Mile

In 2019, Michele lost her son, Nathan, to cancer. The virtual nature of The Million Mile gave her the opportunity to turn her pain and grief into hope for other kids still fighting by bringing together friends and family for her cause. Last year, her team, [Nathan's Cancer Slayers](#), raised more than \$65,000 and logged nearly 9,000 miles!

The creativity of your support helped Alex's dream of curing cancer continue.



Costumed Steps for a Cure

It's no secret that ALSF supporters love to get active – and last year's [Virtual End Childhood Cancer 5Ks](#) proved just that! On May 23, participants joined the first Virtual Walk/Run, and October 31, during the Halloween Edition, more than 1,500 participants donned costumes in their neighborhoods, nearby parks, and favorite haunts to raise awareness and funds for pediatric cancer research, all while practicing safe social distancing.



Taking a Virtual Stand

Each year, 3-year-old Annabelle and her family host a lemonade stand for kids like her cousin, Summer. Sadly, Summer passed away in 2016 at 2 years old from hepatoblastoma, a rare liver cancer. During Lemonade Days this year, Annabelle swapped her yearly stand for [a delivery service](#) that offered lemonade, baked goods and even personalized cooking videos to donors.



Meaningful Meals at Home

Last year, culinary events also needed to pivot to a virtual setting: [Alex's Table: A Summer Dinner "To-Go"](#) delivered prepackaged meal kits curated by world-class chefs including Chef Gavin Fine and Chef Marc Vetri to donors' doorsteps. An evening video call with the chefs cemented this experience as a unique one that spawned a similar Connecticut Dinner "To-Go."



The Impact of COVID-19 on Research

Pushing science forward even through setbacks

When COVID-19 forced all but essential employees to work from home, childhood cancer researchers were faced with the same shutdown. Dr. Michelle Monje, an ALSF-funded researcher who studies high-grade gliomas, had less than 12 hours to shut down her lab when California put shelter-in-place orders in effect on March 16, 2020.

Dr. Monje and her team scrambled to save the things they could not lose, like primary cell cultures from children's tumors, and backed up all data to hard drives. Her lab opened again in the summer, but with restrictions and social distancing guidelines in place.

With research interrupted, experiments in the lab stopped, which in turn impacted the pace of pushing experiments out of the lab and into the clinical trial phase. However, as labs reopened and adjusted to new guidelines, childhood cancer researchers found new ways to continue the work for safer treatments and more cures.

In response to these setbacks, ALSF offered 222 COVID-19 grant extensions to researchers, helping ensure the critical projects they started could reach their conclusion thanks to donors like you. Here are a few ways the pandemic impacted research, and how your support helped researchers continue to make lemonade out of lemons.

Researchers pivoted from lab work to “home” work

After Dr. Monje's lab shut down and her team was sent home, they had to adapt their work in order to keep progressing forward. Her team pivoted from in-person lab research to at-home data analysis, research paper writing and pushing two new clinical trials forward. Many other researchers did the same. [Some also took advantage of the ALSF Childhood Cancer Data Lab's virtual data science training](#), developing a new skillset that could be applied (even at home) to help accelerate their research.

Keeping the new generation of pediatric cancer researchers on track

For young investigators, just at the start of their careers, the COVID-19 crisis is an enormous burden. University hiring freezes have made it difficult to find new jobs to launch their careers, and reductions in funding opportunities makes it difficult to start and sustain a new research laboratory. New labs are like start-up businesses, and finances can be extremely tight.

Your support is what helps young researchers continue to enter and stay in the pediatric oncology field, making ALSF a key pipeline. As part of a 2020 ALSF grant outcome survey: 99% of early career grantee respondents said that the ALSF grant they received positively affected their pediatric oncology career, from obtaining a faculty position, to job promotion, to getting additional funding.

Leading Minds Bring Research Online

In 2020, ALSF also launched The Virtual Childhood Cancer Lecture Series to provide educational and networking opportunities for cancer researchers and advocates. Presented by leaders in the field on topics ranging from genomics to survivorship challenges, these lectures provided unique ways to connect, collaborate and continue to build a childhood cancer knowledge base that can be applied to the lab, the clinic and in advocacy work.

Nearly 3,000 attendees tuned in for lectures throughout 2020. You can view upcoming lectures and the entire archive at AlexsLemonade.org/Childhood-Cancer/Lectures.



Childhood cancer hero
Jonathon



Childhood cancer hero
Sebastian



Childhood cancer hero Leevi



Childhood cancer hero Lakelynn with her doctor, Steven DuBois, MD

Research Spotlight

Your donations propel critical research toward key findings



Targeting the Genes that Drive Ependymoma

In 2016, the World Health Organization added molecular characteristics to the classification of brain tumors. As part of this, RELA fusion-positive ependymoma was listed as a subtype to go with ependymoma and anaplastic ependymoma. This distinction suggests that therapies that work for one subtype of ependymoma might not work for another, creating a need for research into the biological underpinnings of the various subtypes.

Ependymomas in general are resistant to chemotherapy, but RELA fusion-positive ependymoma in particular carries a poor prognosis. Despite an understanding that RELA gene fusions drive the development of ependymoma, molecular targets remain elusive, and new therapies are critically needed.

Dr. Stephen Mack, PhD, a 2016 ALSF Young Investigator and 2018 ALSF 'A' Awardee, is searching for those new therapies. Using data from the ALSF Childhood Cancer Data Lab and his own studies, Dr. Mack's lab has worked to identify the key biological and molecular characteristics of ependymoma cells.

His team has discovered genes that RELA fusion-positive ependymomas are dependent upon, which may provide new therapeutic targets to help treat kids with this disease.



Expanding the Clinical Trial Landscape for Children

ALSF Center of Excellence Grants fund leading childhood cancer institutions, with the ultimate goal of accelerating the development of novel therapeutic approaches for kids fighting cancer. Last year, research out of the ALSF Center of Excellence at Dana-Farber Cancer Institute directed by Steven DuBois, MD, helped define the landscape of Phase 1 clinical trials for children with cancer.

Previous research found that it takes about 6.5 years for new drugs to be tested in children that have already been tested in adults. The RACE (Research to Accelerate Cures and Equity) for Children Act, enacted in 2020, requires pharmaceutical companies to evaluate new drugs in children with cancer as they develop drugs for adults. The hope is that the RACE Act will expedite access to novel therapies for children with cancer.

From 2007-2019, Dr. DuBois and his team found 619 Phase 1 trials that allowed patients less than 18 years old to enroll. During a similar timeframe, there were approximately 7,900 Phase 1 adult-only oncology trials. Of the Phase 1 trials that allowed kids to enroll, only 9% were exclusive to children 18 and under. They also found that adult trials may refuse younger participants.

The RACE Act is a first step, but new clinical trial study designs and the use of rationally designed trial eligibility criteria are critical to expand access to novel drugs for children with cancer.

Your donations fund research across all types of childhood cancers

Cell Snapshots Yield Key Insight

Alice Soragni, PhD, of the University of California, Los Angeles is using her ALSF Single-cell Pediatric Cancer Atlas Grant to study pediatric bone sarcomas using a single-cell profiling technique. Bone sarcomas are rare, but 5-year survival rates are in the 60% range, and outcomes have not improved much over the past decade. To find novel effective approaches, researchers need a better understanding of these cancers at the single-cell and molecular level.

Single-cell profiling, a new technique, now allows researchers to get a “snapshot” of each and every cell individually. These snapshots present detailed information about which genes are expressed in each cell. Dr. Soragni and her team are generating single-cell snapshots from 3,000 cells for each of 35 pediatric bone tumors. Their goal is to determine if different proportions of cells correlate with treatment failure, disease recurrence, or drug sensitivity. Their ultimate aim is to identify novel therapeutic avenues to help kids fighting these tumors.

Improving Survival Rates Across the Globe

Catherine Forconi, PhD, of the University of Massachusetts Medical School is using her ALSF Young Investigator Grant to study the impact of CD56^{neg} NK cells in the development of endemic Burkitt lymphoma (eBL), the most common childhood cancer in Africa. This disease occurs at a rate 50 times higher in equatorial Africa and New Guinea than in the U.S., and the 5-year survival rate for African children is 50%. In the U.S., it's 90%.



This disparity could be caused by two common childhood infections that are considered risk factors for eBL, malaria and Epstein-Barr virus (EBV). Dr. Forconi suspects that when children are fighting malaria, their immune cells lose efficiency, making it harder for them to kill cells infected with EBV, and 90% of eBL cases diagnosed in Africa are infected with EBV. If the immune system has been weakened, then it becomes more likely for the child to develop cancer. Dr. Forconi's goal is to determine which parts of the immune system are vital for fighting eBL, which could determine future therapies to improve survival rates for these kids.

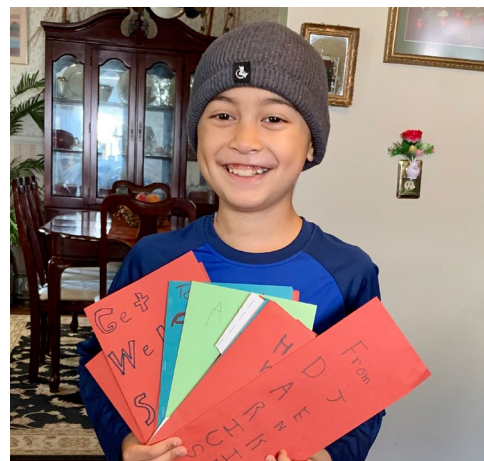
Advancing Novel Therapies Towards Clinical Trials

Promising new research from ALSF-funded researchers Oren Becher, MD from Lurie Children's Hospital and Northwestern University and Robert Wechsler-Reya, PhD from Sanford Burnham Prebys Medical Discovery Institute is moving towards a new clinical trial for medulloblastoma, the most common malignant pediatric brain tumor. “ALSF has provided tremendous funding for this project and all the research leading up to this point,” said Dr. Wechsler-Reya, who received his first ALSF grant in 2009 and has been studying medulloblastoma for more than 20 years.

The project studied the combination of immunotherapy with a drug called tumor necrosis factor (TNF). The therapy eradicated medulloblastoma with the p53 mutations in lab tests, essentially melting the tumor away. They continue to study the potential of this trial drug as a therapy for children with high-grade gliomas like diffuse intrinsic pontine glioma (DIPG).



Childhood cancer hero Jacob



Childhood cancer hero DJ



Oren Becher, MD (left) and Robert Wechsler-Reya, PhD

Big Data Driving Bigger Breakthroughs

Fighting childhood cancer, one dataset at a time

Last year, ALSF's Childhood Cancer Data Lab (Data Lab) continued its mission to develop tools and training programs that help researchers make robust discoveries, faster and cheaper. Learn more about the Data Lab's impact in 2020.

A special thanks to the Data Lab's Founding Sponsors
Northwestern Mutual, The Hayman Foundation and Love Your Melon

Refining the Data Refinery

The Data Lab built refine.bio to provide ready-to-use data for research. Thanks to your support, refine.bio has successfully processed more than 1.3 million transcriptomic assays: data that initially cost \$1.3 billion to generate. In 2020, more than 15,000 new users accessed refine.bio and over 1,700 total datasets have been downloaded since its launch. Without refine.bio, the process of downloading and normalizing a dataset would take a researcher approximately two weeks. That's decades of researcher time saved!



Data Science Training Goes Virtual

The Data Lab training workshops teach researchers how to examine their own data and techniques for gene expression analysis. During these workshops, researchers can take raw data from an experiment and complete initial analysis on their own, accelerating a stage of the research process that can sometimes take months.

In 2020, 35 researchers were trained via these virtual training sessions. Despite pivoting to all-virtual workshops the Data Lab's net promoter score, which measures customer experience, was just as high as during in-person training in 2019. The Data Lab has now trained more than 100 scientists and plans to train at least 150 more over the next four years.

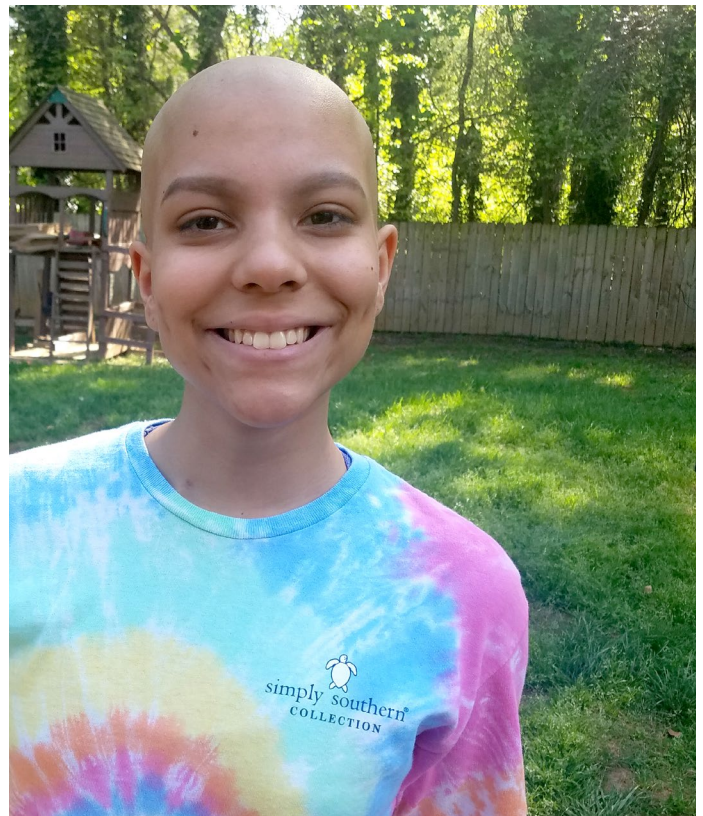
"It's been the best class I've taken since this quarantine began and I could not speak highly enough of the instructors and the topics."

-Virtual Training Workshop Participant

On the Horizon

Single-cell Pediatric Cancer Atlas (ScPCA): ALSF funded ten labs to generate single-cell RNA-seq data, a powerful technique to study tumor heterogeneity, for a broad set of pediatric cancers. The Data Lab will be processing and making the summarized data available to researchers in 2021. Much like refine.bio, ScPCA is expected to save weeks of researcher time that would be invested in discovering and reprocessing data.

Open Pediatric Brain Tumor Atlas (OpenPBTA): The Data Lab is working with the team at the Center for Data-Driven Discovery in Biomedicine at Children's Hospital of Philadelphia on the OpenPBTA to analyze one of the largest collections of pediatric brain tumor data.



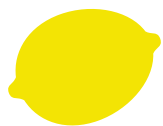
Childhood cancer hero Gaby



2020 Financial Highlights

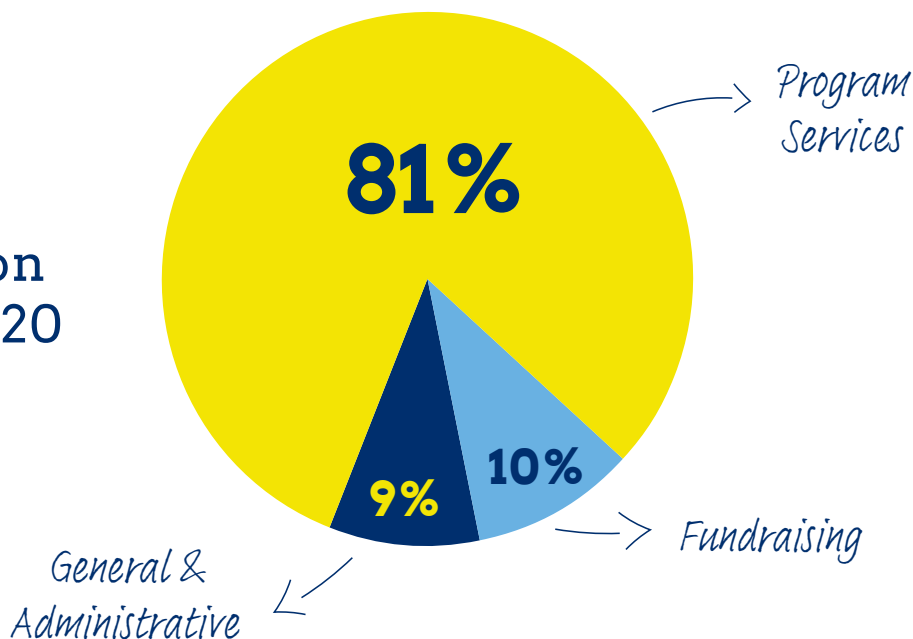
Alex's Lemonade Stand Foundation kicked off 2020 by celebrating 20 years since Alex's first stand. Then the unimaginable occurred, and the COVID-19 pandemic had an enormous financial impact on the economy, which affected the foundation as well. ALSF's fundraising was down by \$8.4M (30%) from 2019, which required a lot of adapting for the organization. We are grateful for having longtime supporters and partners who weathered this storm and rallied with us to continue to raise awareness and funds for childhood cancer research.

ALSF remains committed to fiscal responsibility and transparency, with a goal to operate as efficiently as possible. The organization spent \$15.6 million with 81% of expenditures going towards program services and only 19% used for supporting services. We finished the year with a surplus, which will help us in 2021 to begin to restore pediatric cancer research spending levels from the prior year.



Thank you for all that you do.

\$15.6 million
spent in 2020



2020 Financial Highlights

Statement of Activity

Total Support and Revenues

\$19,999,000	2019	\$28,387,000
---------------------	-------------	--------------

Total Program Services

\$12,748,000	2019	\$22,868,000
---------------------	-------------	--------------

Program Services

2020

2019

 Pediatric Cancer Research	\$9,198,000	\$19,028,000
 Public Awareness/Education	\$1,386,000	\$1,681,000
 Family Service Programs	\$1,228,000	\$1,051,000
 Childhood Cancer Data Lab	\$936,000	\$1,108,000


Total Supporting Services

\$2,899,000	2019	\$3,835,000
--------------------	-------------	-------------

Supporting Services

2020

2019

 General and Administrative	\$1,429,000	\$1,490,000
 Fundraising	\$1,470,000	\$2,345,000

Total Expenses

\$15,647,000	2019	\$26,703,000
---------------------	-------------	--------------

Surplus \$4,352,000

Surplus \$1,684,000



Statement of Financial Position

2020

2019

Total Assets	\$23,320,000	\$19,841,000
Total Liabilities	\$4,363,000	\$5,234,000
Total Net Assets	\$18,957,000	\$14,607,000

Full financial reports and IRS Form 990's are available at AlexsLemonade.org/Reports.

Giving Everyone the Chance to Help

Our work is only made possible by our generous supporters. We are committed to finding ways that empower everyone to take a stand against childhood cancer because we believe everyone can make a difference. Last year, many of our annual events made the virtual pivot, and this transition allowed us to reach more supporters than ever before with unique opportunities to continue the search for cures. To see all the ways you can get involved, check out AlexsLemonade.org/Get-Involved.



The Million Mile

Last year, more than 11,000 supporters of all ages rose to the challenge of walking, running or cycling during [The Million Mile](#). Not only did they complete one million miles together, this nationwide effort to raise funds and awareness for childhood cancer through September, Childhood Cancer Awareness Month, also raised an astounding \$2.2 million in 2020, proving that people are willing to go the extra mile for kids with cancer.



Lemonade Days

[Lemonade Days](#) is a sweet summer event when fresh lemonade stands pop up all over the country to honor ALSF Founder, Alex Scott's memory. What started as a single lemonade stand in Alex's front yard has grown into a national movement, and in 2020, it continued. The usual June event took place in August and more than 400 supporters held stands to raise money and awareness for pediatric cancer. Despite the obstacles introduced by COVID-19, ALSF's passionate supporters raised more than \$500,000 to fund safer childhood cancer treatments and more cures.



When you hold a fundraiser, you join the fight against childhood cancer and give hope to all kids facing the disease.

Gamers for Kids with Cancer

In 2020, ALSF launched the [Gamers for Kids with Cancer program](#). Supporters set up online fundraisers where they could accept donations from friends, family and viewers while playing the video games they love. In its first few months, 19 gaming fundraisers joined the cause, culminating in an online stream-a-thon to close out the year.



Team Lemon

Despite the cancellation and rescheduling of many major race events in 2020, ALSF's charity racing team amassed nearly 190 runners who ran for kids with cancer virtually. Together, those passionate [Team Lemon](#) members raised more than \$150,000 for childhood cancer research.

"It has been humbling and restorative to know that there are people who care and are willing to help."

- Christopher, dad to childhood cancer heroes Hope and CJ



Make a Difference for Kids Fighting Cancer



At Alex's Lemonade Stand Foundation (ALSF), we know making a difference for kids with cancer is meaningful to you. That's why we're happy to offer many opportunities to support our mission. Whatever your motivation or financial goals, there is a way for everyone to join the fight against childhood cancer!



However You Give, it All Adds Up to Cures

Fight Childhood Cancer, One Month at a Time

[The One Cup at a Time Club](#) is a passionate group of monthly donors committed to ending childhood cancer together. Emily, a supporter of ALSF since 2017, joined the One Cup Club so her regular donations could make an even greater impact for childhood cancer heroes.



“Hearing Alex’s story changed my whole outlook on life and made me passionate about spreading awareness and raising funds for such a great cause.”

- Emily, One Cup member since 2019

Leave a Legacy of Cures

By including ALSF in your will, trust or other estate plans, you can impact the fight against childhood cancer for generations, at no cost to you during your lifetime. Your legacy gift will bring us closer to realizing Alex’s dream: cures for all kids with cancer. Your legacy is their future.

Co-Fund a Grant with ALSF

ALSF partners with foundations and organizations that share a common goal of curing childhood cancer. When we work together, we can fund more cutting-edge research projects to accelerate the pace of cures and new treatments for all childhood cancers. Opportunities to co-fund a grant with ALSF are tailored to your organization’s mission.

Give a Gift of Stock

Invest in the fight against childhood cancer by donating stocks or securities to ALSF. Your gift will have an immediate impact on our ability to support childhood cancer families and fund innovative research. Additional benefits may include avoiding capital gains tax and receiving a charitable income tax deduction.

Cures Can’t Wait

The Cures Can’t Wait Campaign was launched to make up for research and breakthroughs that were put on hold due to the COVID-19 pandemic. Goals of the campaign include increasing critical research, fueling big data discoveries through ALSF’s Childhood Cancer Data Lab (CCDL), and supporting families in treatment. Your leadership gift to Cures Can’t Wait will help spark innovation and meet the needs of childhood cancer families. For kids with cancer, cures can’t wait.



Childhood cancer hero Anthony

Learn more about these opportunities at [AlexLemonade.org/Ways-To-Give](https://www.AlexLemonade.org/Ways-To-Give) or contact Jay Scott at Jay@AlexLemonade.org or (866) 333-1213.

Thank you to all our generous partners and fundraisers who stepped up in a big way throughout 2020 to help kids with cancer. We wanted to shout out some standouts from last year.

ALSF tried to best accurately include all our supporters here, but please let us know if we have left someone out.

Fundraisers and Charity partners

\$100,000 and above

I Care I Cure Childhood Cancer Foundation
Chance for Life
Cure4Cam

\$50,000 and above

2020 ILWU Walk the Coast - Southern California
Bear Necessities
ChadTough Foundation
CORD Fund
Hopkins Helping our Heroes 2020
Lemon Divas and Dudes 2020
#LoveforLucyAlways
Maddie's Million Miles 2020
Nathan's Cancer Slayers
Sarosiek Lab Million Mile Challenge 2020
SuperNora 2020
Warriors for a Cure 2020
Summer Strong Hero Fund

\$25,000 and above

2020 A Million for Alex and Carly!
A Million Miles for Frankie
Dale & Amy Earnhardt Fund at Nationwide Children's
Defeat Childhood Brain Tumors 2020
Hug Your People 2020
Kick Cancer's Butt with Kabir & Ayaan
Lawton Road Kids Against Childhood Cancer
Levitt/Decker Laboratory 2020
SebastianStrong
Small but Mighty - Olivia's Team
Team Cashel MM
TIL Foundation 2020

\$5,000 and above

16th Annual Family Grandstand for Enzo
3rd Annual Anderson Lemonade Stand
A Million Miles For Tony
A Smile for Kyle Lemonade Stand
Abigail's Athletes 2020
AKPSI Food Truck Fundraiser
Alina, Maya, & Jai's 3rd annual lemonade fundraiser
Arden's Army: Making Lemons into Lemonade
Asher's Stormtroopers 2020
Ava's Awesome Lemonade Stand
Baltimore Brain Tumor Bashers 2020
Brian Morden Foundation
C&C Lemonade Factory's 4th Annual Lemonade Stand
Cancer Cure Crusaders 2020
Cellbusters 2020: Lubbock Pediatric Cancer Walk

Closer to the Cure Fund
Colden's Cause For a Cure
Colin Crushing ALL
Conner's Crusade
Declan Roberts Fund
DKICP Koomoa Team 2020
Donna and John Kontje's Annual Halloween Grand Stand 2020
Emily's PINK Crus-Aiders
Faces of Research 2020 Gavin Strong Fund
Grayson's Fight Club
Happy 10th Birthday Super Zoe!!!
HerranzLab 2020
Jordan Grace's Journey
Kalli's Super Team
Koschmann Team
Lauren's 2020 Lemonade Stand
Lemon Trails 5K Run/Walk
Lemons on the Loose - BFPC 2020
Lily's #BigLemonade World Record Million Mile Team 2020
#LovingLester
Make Me Stronger: Little Hereos
Miles for Caden 2020
Million Mile Data Bashers
Million Mile Smile 2020
Night of the Whacking Dead 2020
#NoahNation
Racing for Research
RCD Foundation
Run, Alex! Run! 2020
RUNegades 2020
Runners for the Future
#SamStrong
Schreiber Slam V: Wrestle for a Cause
Smiles for Scarlett
St. James Academy Lemon Out Event
Stepping out for a Cure in Georgetown - 2020
Tate's Mates
#TaylorRides200
Team Beckwith-Wiedemann Syndrome and WAGR Syndrome 2020
Team Collette!
Team Cure All Kids
Team Elijah T 2020
Team Finn
Team Kees 2020
Team Madelynn 2020
Team Mikey G
Team Theresa's 18th Annual Softball/Family Fun Day Supporting Alex's Lemonade Stand Foundation!
Teddie's Tribe
Teens4Cures

The Malvern School 2020
The Maze Runners
The NY & CA NetSuite User Group Q3 Virtual Summit
The Valley Forge Towers Community Association's 11th Annual Alex's Lemonade
Tiny Treasures 2020
Turtle PWR
UCLA Nano Transformers 2020
UCSF Pediatric Oncology/BMT
Walensky Running Buffers 2020
Whitaker Million Mile
Williams Family 2020 Virtual Alex's Lemonade Stand

Business Partners

\$1,000,000 and above



\$100,000 and above



\$100,000 and above

Jones Financial - Northwestern Mutual

\$50,000 and above

Arby's
Citrus World
Globe Life
Hy-Vee
Kraft Heinz
Love your Melon
Northwestern Mutual Chicago
Northwestern Mutual Indiana
Northwestern Mutual Middleton
Northwestern Mutual Park Avenue
Northwestern Mutual Peloton 30 for 30
Northwestern Mutual Tampa
Panera / Pan American Group, LLC
Rita's Italian Ice
The Rose Group/Applebee's
Sage Financial Group
Scentsy

\$25,000 and above

ACME
Bob's Discount Furniture
Hotchkiss Insurance Agency
Lightfoot, Franklin, & White
Nonni's
THMED, LLC

\$5,000 and above

All Stars Gymnastics Academy
Alliant Insurance
Avis Budget Group
Cancer Gets Lost
CBRE
Cigna
CT Lemonade
Curbell
Flowerchild Holding Company LLC
Fresh Grocer Holdings
GasTec
GoPure
Hamilton Beach
Health Recovery Solutions
Hello Bello
Hy-Vee - Liberty
Insomnia Cookies
Iron Davis
Jersey Mike's
Keller Williams
KPMG LLP
Krapf Bus Companies, Inc.
Mount Pocono Campground, Inc.
Multi-flow Industries
Newington Rotary Club
Northwestern Mutual Buckhead
Northwestern Mutual Capitol Region - New York
Northwestern Mutual Chicagoland
Northwestern Mutual Clayton
Northwestern Mutual Cleveland

Northwestern Mutual Columbus
Northwestern Mutual D.C.
Northwestern Mutual Downtown Milwaukee
Northwestern Mutual Greater Hartford
Northwestern Mutual Greater Milwaukee
Northwestern Mutual Jacksonville
Northwestern Mutual Louisville
Northwestern Mutual North Shore Illinois
Northwestern Mutual Omaha
Northwestern Mutual Princeton
Northwestern Mutual Sacramento
Northwestern Mutual San Antonio
Northwestern Mutual Twin Cities
Northwestern Mutual Wellesley
Northwestern Mutual Williamsville
ONEHOPE
Perryscope Productions LLC
PlayPower
Quilts & Quilts The Fabric Shoppe
Rise Pies, LLC
Stride Rite
The Resseguie Group

The Westover Companies
Triose
Union Street Tavern Trot
Children's Hospital of Philadelphia

Thank you to the following partners for their in-kind support!

Triose
Morgan Lewis
CBS 3 Philly

Our Mission



To change the lives of children with cancer through funding impactful research, raising awareness, supporting families, and empowering everyone to help cure childhood cancer.

2021 Board of Directors

Mary Austen (Board Chair)
President and CEO, Tierney

Kristin Kelly (Board Vice Chair)
Former Branding and Merchandising Executive, Lancôme and Cole Haan

Ann Weiser (Board Secretary)
President, Weiser Works

Larry Vincent (Board Treasurer)
Chief Branding Officer, UTA Brand Studio

Marc Bruno
Chief Operating Officer of Aramark

Stephen Cohn
Co-President, Sage Financial Group

Joel Frank
Managing Partner, Lamb McErlane, PC

Michael Harad
Global Client Service Partner, EY

Jocelyn Hillman
Parent Advocate

Gianna Jackson
Attorney and Corporate Social Responsibility Professional

Billy King
Radio Host/TV Analyst

Tim Lung
Retired Partner, KPMG

Meena Mansharamani
President, Intend Growth, LLC

Sue Naegle
Chief Content Officer, Annapurna Pictures

Chip Olson
President and CEO, The Olson Research Group, Inc.

Jay Scott
Alex's Father, Co-Executive Director of ALSF

Liz Scott
Alex's Mother, Co-Executive Director of ALSF

Jeff Snyder
President, Inspira Marketing Group

Scientific Advisory Board

Garrett Brodeur, MD
Children's Hospital of Philadelphia

Steven DuBois, MD/MS
Dana-Farber Cancer Institute

Nada Jabado, MD/PhD
McGill University

Stephen Lessnick, MD/PhD
Nationwide Children's Hospital

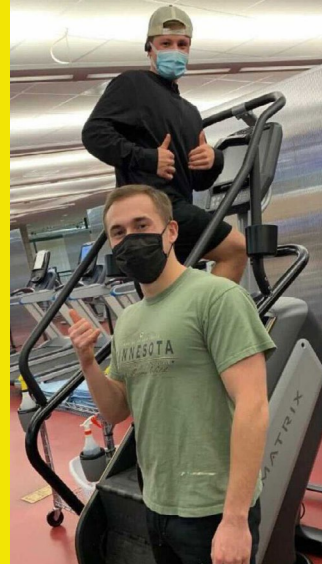
John Maris, MD
Children's Hospital of Philadelphia

Katherine (Kate) Matthay, MD
University of California, San Francisco

Michelle Monje, MD/PhD
Stanford University

Maureen O'Brien, MD/MS
Cincinnati Children's Hospital Medical Center

Donald (Will) Parsons, MD/PhD
Texas Children's Cancer Center



111 Presidential Blvd., Suite 203
Bala Cynwyd, PA 19004

866-333-1213

AlexsLemonade.org

    @AlexsLemonade